



FALCON TRACKING

DOT Advanced Telematics CAN Install Supplement



DOT Advanced Telematics CAN Install Supplement Version 1.4

Table of Contents

Table of contents	2
Overview	3
Additional Parts Required to install	4
DOT Analytics Installation Instructions	6
Fitting Information	6
Connecting the CAN CliQ	6
Connecting the CAN Analytic Loom to the Can Analytic Module	7
Connecting the CAN Module to the DOT	7
Connecting the Cat5e Extender—Options 1 and 2	7
Connecting the Cat5e to the DOT	8
The 12 volt or 24 volt relay	8
Connecting the relay to the CAN Analytic Loom	8
Connecting the relay to the DOT loom	9
Additional Information if upgrading Falcon Analytics to DOT Analytics	9

Overview

This installation guide is used in conjunction with the Tachomaster DOT Installation guide available from this link

<https://kb.roadtech.co.uk/user/pages/images/pdf/Tachomaster-DOT-Install-Guide.pdf>

Once you have completed the DOT installation please use this guide to install the DOT Advanced Telematics device. Once complete this will collect additional CAN statistical data which can be reviewed in the Falcon Tracking analytics module.

Additional Parts Required to install

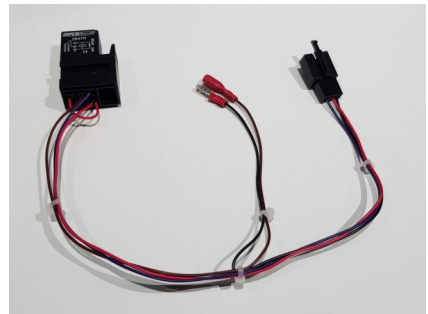
Looms and Cables

CAN Analytic Module Loom
(Not supplied if Vehicle is being upgraded from Falcon Analytics)



CAN Module Loom to RS232 Adaptor

CAN Analytic Power Loom



Cat5e lead

Additional Parts Required to install

Hardware

CAN Power Relay

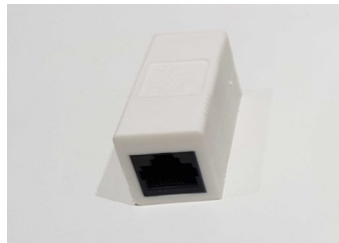


CAN Analytic Module



RS232 Adapter

&



Cat5e Extender



Or the above adapter replaces the RS232 Adapter & Cat5e Extender (you will only have one but the image shows both ends of the same device)

DOT Analytics Installation Instructions

Fitting Information



Prepare the CAN Analytic Loom, a number of the 8 multi coloured cables can be shortened, if required.

The Orange, Green and Red cable can be shortened to 5 to 10cm length and insulated.

The White and Blue cables can be shortened to 15 to 20 cm and insulated, unless a Trailer Tag Transceiver is being fitted.

The Brown and Black cables will need to be extended as necessary to connect to the "CAN Analytic Power Loom".

Connecting the CAN CliQ

The CAN Analytic Loom Green CliQ will need connecting as per the fitting instructions available for your specific vehicle at

<https://www.falcontracking.co.uk/install/help> (you will need a valid Falcon login, please ask your Falcon administrator to supply this)



These instructions will also indicate if any additional CliQ cables are required (Please contact Roadtech if this is indicated).

Connecting the CAN Analytic Loom to the Can Analytic Module

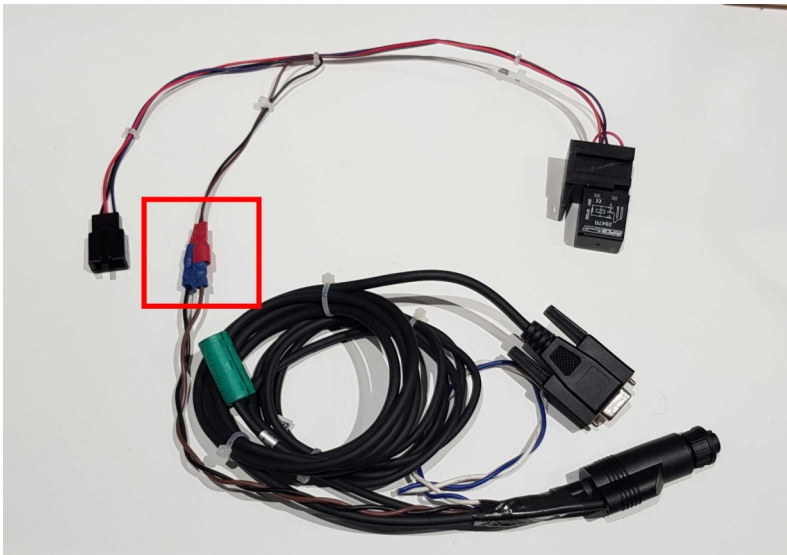
The Multi plug on the CAN Analytic Loom then needs to be connected the CAN Analytic Module.

The RS232 (9pin) connector then needs to be connected to the “CAN RS232 Loom”. This connection need to be made secure.



Connecting the CAN Module to the DOT

This loom along with the Brown and Black wires need to be routed to the location of the DOT unit (usually located near to the Tachograph, if fitted).



Connecting the Cat5e Extender

There are two possible hardware options for the Cat5e extender, one with a cable and white extender plug (option 1)

OPTION 1 A Cat5 Extender and Cat5 lead are supplied to extend the RS232 lead if required. (Please insure the leads are both inserted into the Extender and the tab on both leads is located and locked).



OPTION 2 The silver adapter replaces 1) the RS232 Adapter and 2) the Cat5e extender. The red cable below will be black and is cable 3 above.



Connecting the Cat5e to the DOT

The RS232 Lead or Extension needs to be connected to the DOT on port 1 (This is the port closest to the outside edge of the DOT).



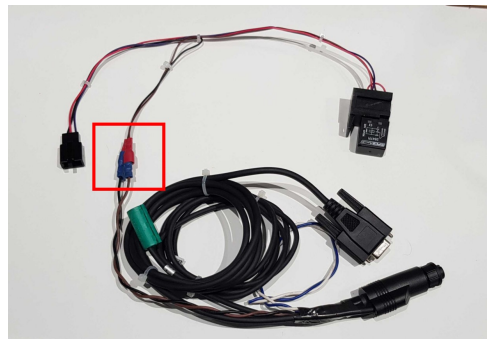
The 12 volt or 24 volt relay



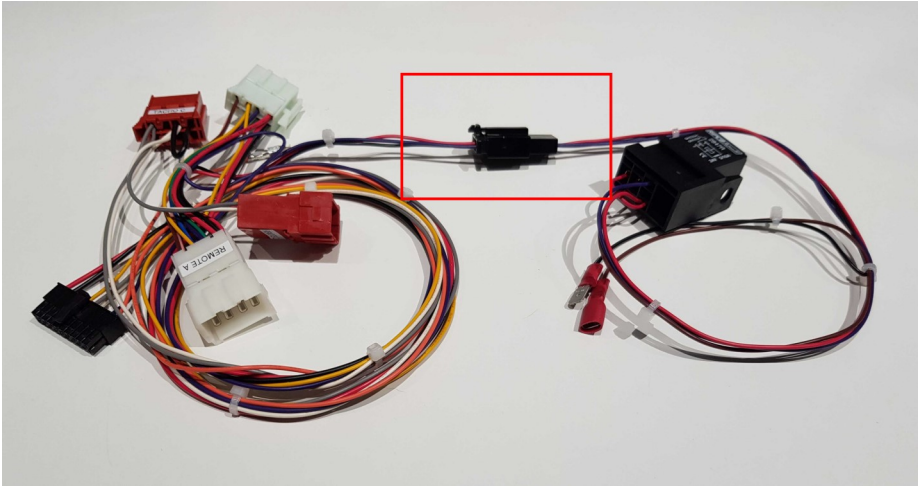
Next check that the CAN Power Relay is the correct voltage for the vehicle system voltage, most LGV's and HGV's are 24v, with smaller vans and cars being 12v.

Connecting the relay to the CAN Analytic Loom

Once the Relay voltage has been checked, check the relay is fully located in the holder, then connect the Brown wire to the Brown from the CAN Analytic Loom, and the Black wire to the Black from the CAN Analytic Loom, Correct connection of these 2 wires is essential.



Connecting the relay to the DOT loom



Now connect the 3 pin connector on the CAN Analytic Power Loom to the connector on the DOT main Loom. The DOT can now be powered up by connecting it to the 20 way Power connector on the main loom as per the DOT installation instructions.

After a few minutes the LED on the CAN module should light, either Green or flashing Red/Green.

Additional Information Require if upgrading Falcon Analytics to DOT Analytics

- Remove the Falcon Unit including Power Lead and Antenna.
- Remove the old CAN module (Flex Unit)
- Remove the Falcon CAN Power Connector and RS232 interconnect.
- Please leave the “CAN Analytic Loom” institute and prepare as above.



FALCON
TRACKING



TACHO
MASTER

DOT



ROADTECH

Innovate. Integrate. Secure.

Copyright © 2021 – Road Tech Computer Systems Ltd
All rights reserved

Road Tech Computer Systems Ltd, Shenley Hall, Rectory Lane,
Shenley, Radlett, Hertfordshire, UK: T: 01923 460000
E: crm@roadtech.co.uk

Version: 1.3



TACHO
MASTER



FALCON
TRACKING



ROAD
RUNNER



CHECK
MASTER



PRE
DRIVE